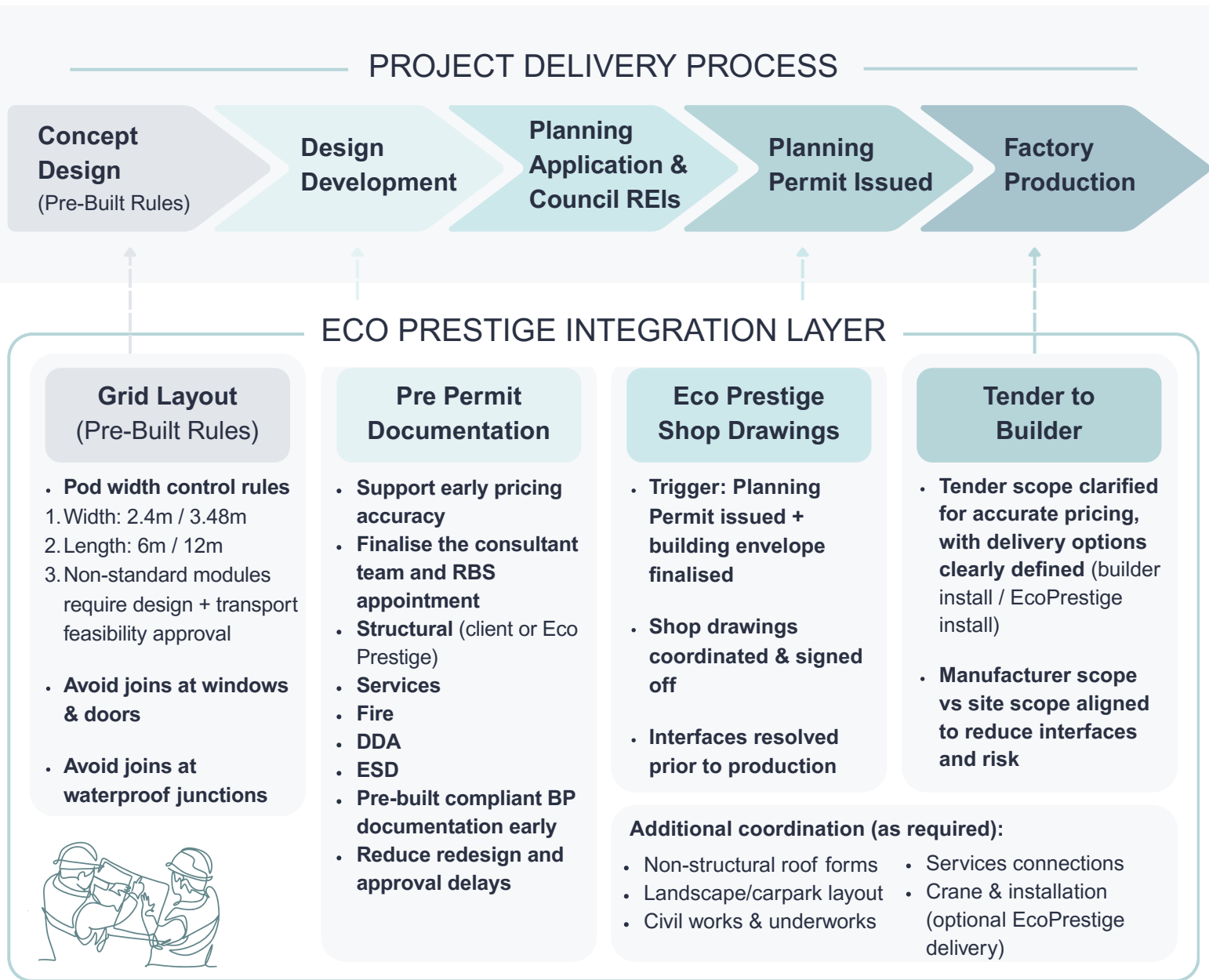


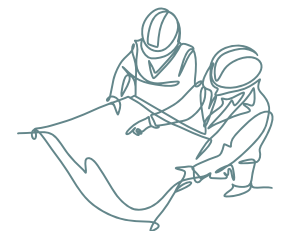
Eco Prestige x Architects | Builders | Developers

Pre-Built Certainty from Design to Delivery



Key Milestone

- 1** Grid Layout Confirmed (Pre-Built Rules Locked)
- 2** Pre-Permit Documentation & Consultant Pathway Aligned
- 3** Planning Permit Issued + Envelope Finalised → Shop Drawings Sign-Off



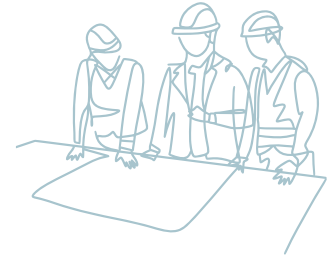
EcoPrestige does not replace the architect, builder, or developer.

We strengthen project outcomes by making designs genuinely pre-built ready from day one.



Eco Prestige x Builders

Simple Modular Delivery – Clear Scope – Easy Pricing



PROJECT DELIVERY PROCESS

Site Works & Foundations

Modular Installation

Services Connections

Roofing
(Project Dependent)

Module Junctions & Finishes

Fire & Compliance
(Commercial)

BUILDER SCOPE

1 Site Works & Foundations

Typical builder scope:

- Bored piers
- SHS steel posts
- Civil works
- Sewer, stormwater & water risers

Notes:

- The majority of projects use subfloor systems
- Standard clearance: ~400mm under modules (for service connections)
- SHS posts bolted or welded to the modular frame

2 Modular Installation

Installation includes:

- Crane lift + rigging crew
- Modules placed and aligned
- Structural fixings completed

Installation options:

- Builder-engaged crane & rigging crew

OR

- EcoPrestige supplied the installation team

3 Services Connections – Reduced Trade Scope

Builder / Trades only need to:

- Connect plumbing to risers
- Install a wall-mounted hot water unit
- Connect the electrical mains
- Final stormwater + sewer connections

Air-conditioning:

- Split systems pre-installed & pre-roughed
- External units connected on-site

4 Roofing (Project Dependent)

Small spans / limited modules:

- No structural roof required
- Roof fall integrated into modules
- Gutters clipped externally
- Downpipes connected to stormwater

Larger spans / multiple modules:

- Non-structural roof only
- Ridge capping installed
- Directional fall set by the roof plumber
- No propping / no structural framing
- No scaffold required in most cases

5 Module Junctions & Finishes

EcoPrestige supplies:

- Internal flooring infill (module joints)
- External cladding infill
- Matching paint for touch-ups

Builder scope:

- Minor finishing works only
- No full cladding trades required

6 Fire & Compliance (Commercial Projects)

EcoPrestige provides (within modules):

- Fire services roughed in and fitted out

Builder to price:

- Local fire system connection
- Final certification via a fire consultant



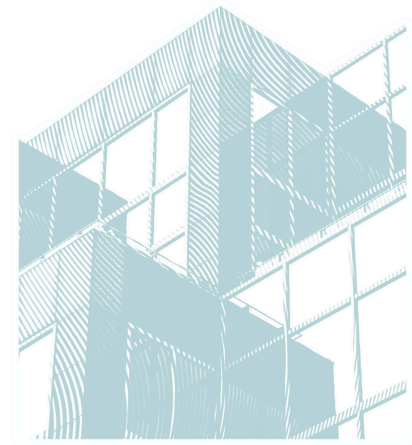
WHAT BUILDERS NEED TO PRICE

Commercial Projects

- Civil works
- Subfloor / piers / SHS posts
- Service connections
- Fire services final connection
- Hardscape & softscape
- Non-structural roof (if required)
- Crane & installation (or EcoPrestige install)

Residential Projects

- Similar scope
- Hardscape & landscaping subject to client expectations

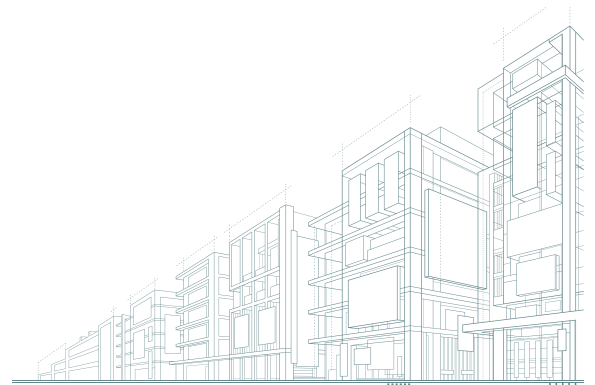


WHAT BUILDERS DO NOT NEED TO PRICE

- Structural slabs
- Inter-level concrete floors
- Structural roof framing
- Full rough-in and fit-off
- Internal finishes
- External cladding
- Window installation
- Extensive scaffolding
- Weather-dependent sequencing

KEY BUILDER BENEFITS

- Faster programs
- Easier pricing
- Reduced site labour
- Less coordination
- Lower weather risk
- Predictable scope



EcoPrestige does not replace the builder.

EcoPrestige simplifies delivery by supplying fully completed modular units—allowing builders to focus on **site works, connections, and project delivery**, not traditional construction complexity.

