



Design And Floor Plan Brochure



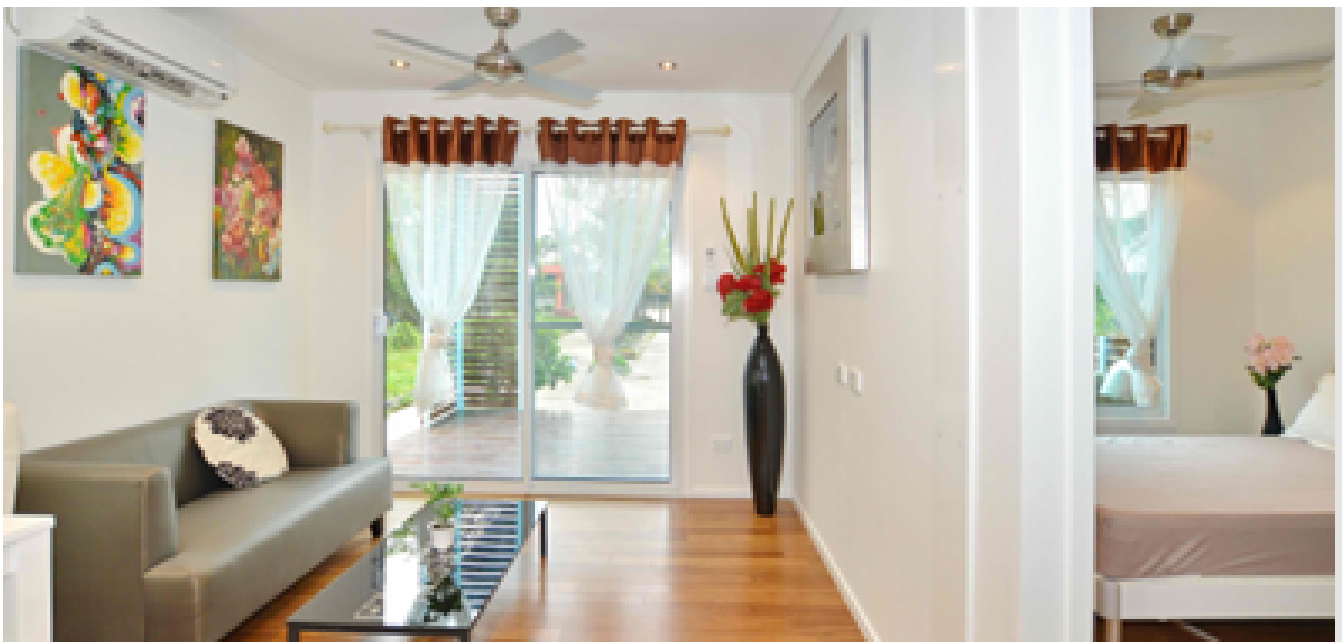


Design And Floor Plan Brochure

Introduction

A Design and Floor Plan Brochure is an essential tool for architects, interior designers, real estate agents, and construction companies. It serves as a visual representation of architectural layouts, showcasing property designs, spatial arrangements, and structural details in an easy-to-understand format. These brochures help clients, investors, and potential buyers visualize the flow of a space, making informed decisions about purchasing, renovating, or designing properties.

In this guide, we will explore the significance of design and floor plan brochures, their key components, different types, design principles, and best practices for creating effective and engaging brochures.



Wall, Ceiling and Flooring compliance

Fireproof · Insulated · Weatherproof

1. Triple-Layer Defence Wall System

Exceeds NCC Standards, Customised for Fire & Weather Resilience

A. Structural Composition:

| **Fire Barrier:** 12mm AS 2588-certified fire-rated plasterboard + weather-resistant cement fibre board

| **Dual Insulation:** 50-100mm rock wool (density $\geq 60\text{kg/m}^3$) + 20-50mm polyurethane foam (R-value ≥ 2.8)

| **Breathable Waterproofing:** Class 4 vapour-permeable membrane (AS/NZS 4200 compliant), moisture transmission $\geq 800\text{g/m}^2/24\text{h}$ with liquid water resistance

B. On-Demand Upgrades:

Base configuration meets BAL 12.5 (low-risk zones). Optional upgrades include:

- ▶ BAL 40: 6mm fire-rated magnesium oxide board cladding + intumescent sealants
- ▶ BAL-FZ (Flame Zone): Full metal cladding + integrated fire sprinkler system

2. Cutting-Edge Thermal Management

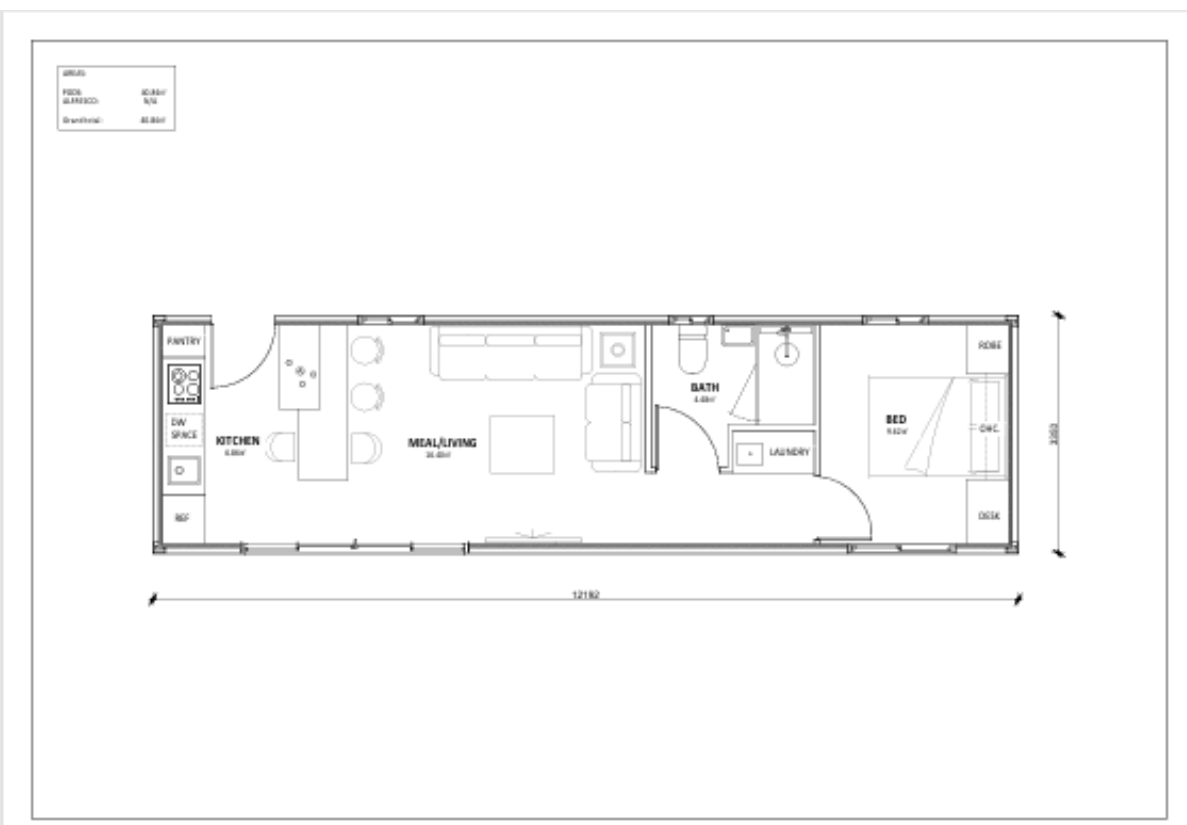
NatHERS 7-Star Certified – 40% Energy Savings Guaranteed

Wall Performance:

R-value ≥ 2.8 (lab-tested up to 3.1*), compliant across Australian Climate Zones 1-7 – from Tasmania's frost to Darwin's tropical heat

Ceiling Innovation:

- ▶ Dual Insulation: 150mm reinforced polyurethane batts (R-value 5.1) + foil sarking (ASTM C1371 emissivity ≤ 0.03)
- ▶ Thermal Break: EPDM rubber isolation strips (AS 3715 certified) between steel framing and interiors



3. Full Australian Certification

System	Compliance	Performance Edge
Fire Safety	AS 1530.4 fire resistance test	90-minute structural integrity, fire spread delay
Insulation	AS/NZS 4859.1 thermal certification	35% winter heat retention, 28% summer cooling savings
Weatherproof	AS/NZS 4200 Class 4	Withstands 120mm/h rainfall while draining condensation
Energy Efficiency	NCC Section J & NatHERS 7-Star	25% reduced HVAC load, slashing power bills

4. Why Choose Our Envelope System?

Unmatched Advantages Over Conventional Modules

A. Disaster Resilience:

- QLD Cyclones: AS 4055 wind pressure certified (W41 rating)
- VIC Bushfires: BAL-FZ solutions endorsed by CFA (Country Fire Authority)
- WA Coastal Corrosion: Cement boards pass AS 4347.3 3000-hour salt spray test

B. Cost Efficiency:

- ▶ 15% on-site labour saved – no additional external insulation required
- ▶ 10-year waterproof warranty (ABIC standard), 1/3 repair costs of brick-and-mortar



5. Visualised Innovation

Precision Thermal Reflection: Foil sarking reflects 95% radiant heat

Airtight Sealing: Compressible sealant strips (extended AS 2047 window standard application)

Pest Resistance: Rock wool layer naturally deters mould and termites

6. Waterproof System: The Invisible Guardian of Modular Buildings

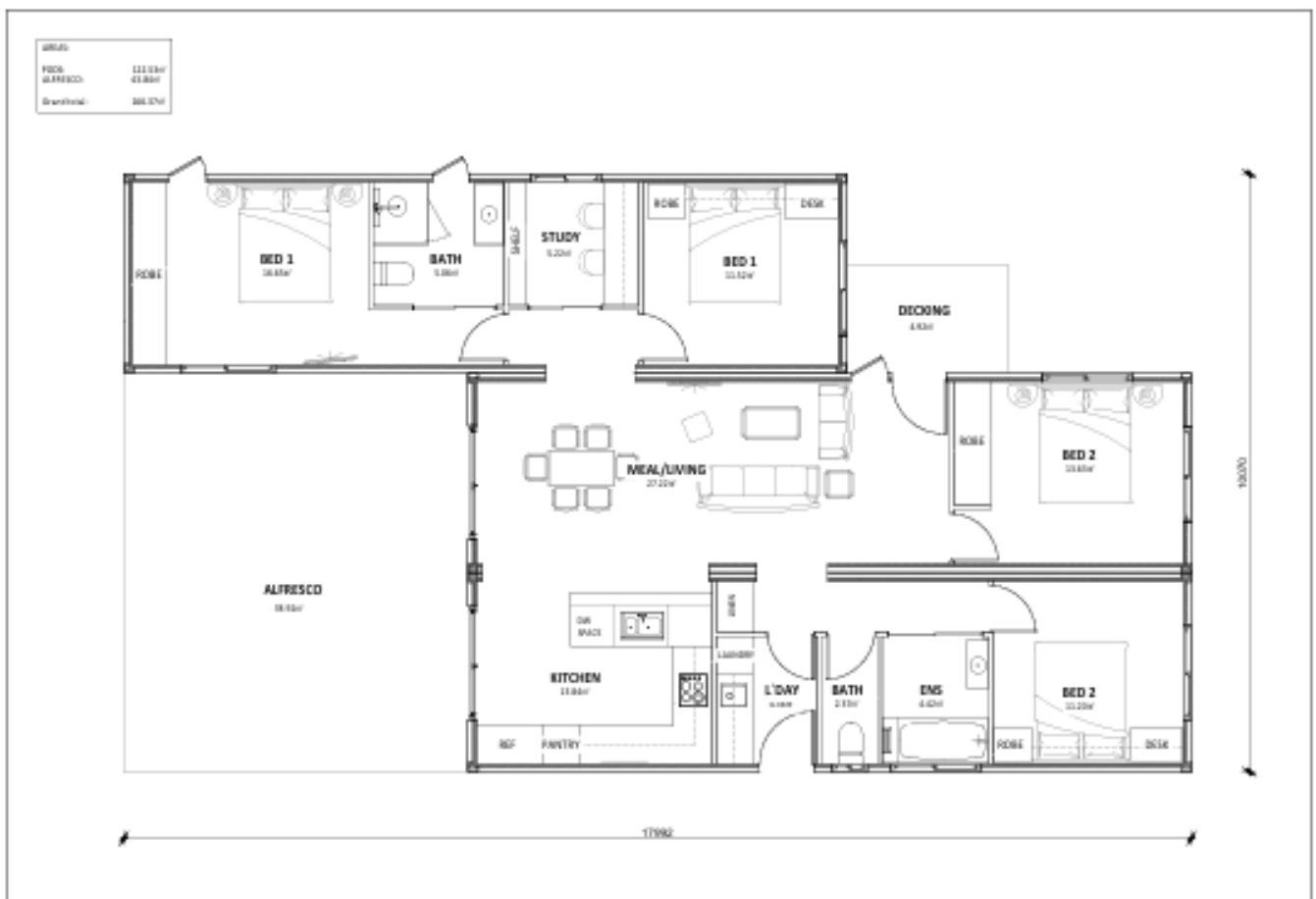
Compliant with AS 3740 for waterproofing, it provides lifelong protection for your building.

A. Why is the waterproofing of modular buildings more reliable?

Prefabricated in the factory with precise control, eliminating the potential hazards of traditional construction.

I Environmental Advantages:

100% of the construction is carried out in the factory without the interference of wind and rain, ensuring that the coating is uniform and free of defects.



Material Advantages:

Using 500% ultra-ductile acrylic coating, which can automatically repair micro-cracks as the module deforms, completely solving the leakage risk caused by transportation bumps.

B.Highlights of Core Technologies

Every step, from materials to processes, can withstand the test.

Material Certification:

- ✓ WaterMark Level 1 Certification (AS 4654.2)
- ✓ Elongation at break $\geq 500\%$ (AS 4654.2 Clause 7.4)
- ✓ Bonding strength $\geq 1.5\text{MPa}$ (AS 4858)

Construction Process:

- ▶ Double-layer coating with non-woven fabric reinforcement to ensure all-round protection without blind spots
- ▶ Embed an arc with $R \geq 10\text{mm}$ at the internal corner to eliminate stress concentration
- ▶ Add an additional 300mm-wide reinforcement layer at the root of the pipeline to prevent leakage at weak points

A. Quality Verification: Speak with Data

Inspection and testing, fully traceable throughout the process.

Test Items	Standard	Requirements	Measured Results
Immersion Test	AS 3740 Clause 8.4	No leakage within 24 hours	
Dynamic Load Test	AS 1170.1	No peeling after 1000 cycles	
Alkali Resistance (pH 13)	AS 1580.481.5	No blistering or peeling within 168h	

B. Our Commitment

10-year Warranty: Lifelong maintenance of the waterproof system, and free repair of leakage problems within 10 years.

Full Transparency: Provide third-party test reports, construction record videos, and design statements signed by RPEQ engineers



Importance of House Floor Plans in Architectural Design

1. Enhancing Visual Communication

A well-designed floor plan brochure effectively translates complex architectural drawings into a visually appealing and easily digestible format. It allows clients to understand spatial layouts, room functions, and structural elements without needing technical knowledge.

2. Facilitating Decision-Making

For real estate buyers, having access to a clear floor plan is critical in evaluating properties before making a purchase. It provides insights into space utilization, room sizes, and layout efficiency, helping them make informed decisions.

3. Boosting Marketing and Sales

Real estate developers and agents use floor plan brochures as powerful marketing tools. Professionally designed brochures enhance property presentations, attract potential buyers, and contribute to successful sales conversions.

4. Showcasing Architectural Innovation

For architects and interior designers, a floor plan brochure highlights design concepts, innovative layouts, and functional solutions. It serves as a portfolio piece that showcases expertise and creativity to potential clients and investors.

5. Providing Essential Information in One Place

A design and floor plan brochure consolidates all necessary details, including property descriptions, amenities, dimensions, and material specifications, ensuring prospective clients have all relevant information at their fingertips.





Phone 0405860421
Email sales@ecoprestige.com.au
Visit <https://ecoprestige.com.au>

Join our community

