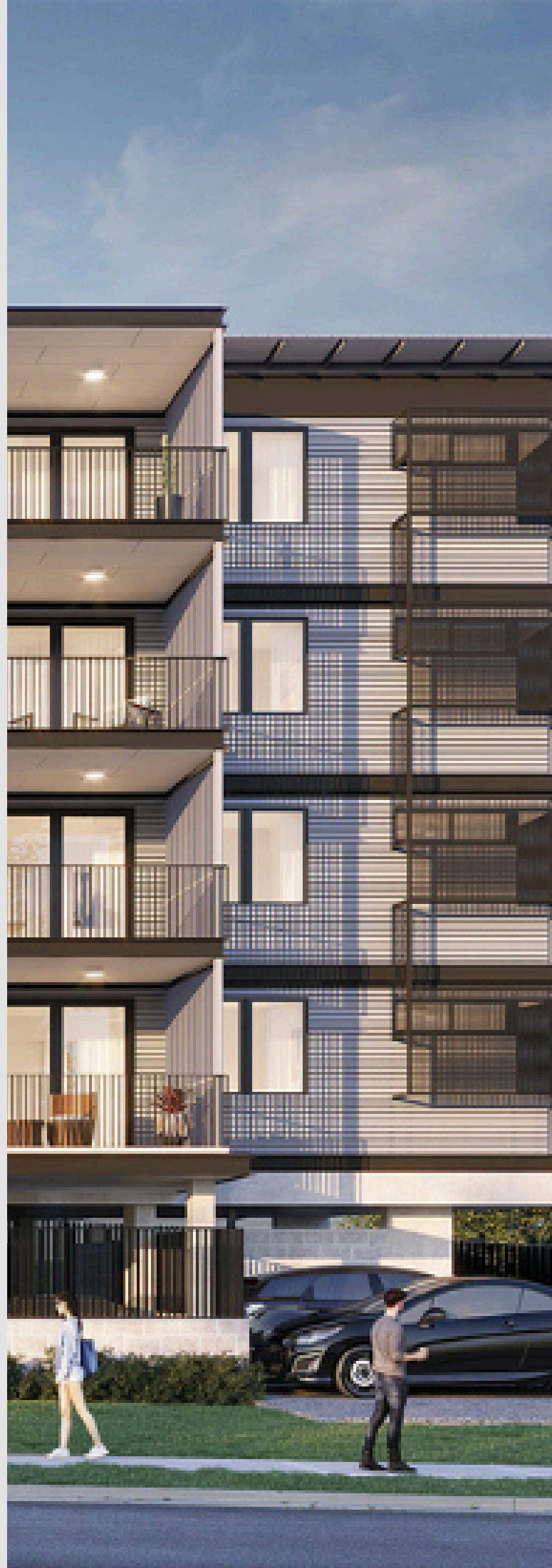




Australian 7-Star
Energy Efficient
Modular Buildings –
Innovating the
Future, Defining
Sustainable Living



Why Are Our Modular Buildings Unique?



Factory Prefabrication • Precision Energy Efficiency • Intelligent Eco-Friendliness

Our modular buildings not only meet the **NatHERS 7-Star Certification** but redefine industry benchmarks with full lifecycle energy-efficient design. From materials to craftsmanship, construction to operation, every step integrates cutting-edge technology, **reducing energy consumption by 40%**, balancing sustainability and comfort.

Core Features of Modular Construction



1. Factory Prefabrication, Zero-Waste Construction

Precision Manufacturing: 100% factory production eliminates weather delays and material waste, ensuring seamless integration of insulation and waterproofing systems.

Environmental Benefits: 30% lower carbon emissions, 95% material efficiency, and near-zero noise pollution on-site.

2. Advanced Thermal Insulation, Maximized Efficiency

Drywall System:

Dual Insulation: 50-100mm rock wool (density $\geq 60\text{kg/m}^3$) + polyurethane foam (R-value ≥ 2.8), blocking winter chill and summer heat.

Heat Reflection Technology: Aluminium-zinc alloy roofing (AS 1562.1 certified) reflects 95% of radiant heat, reducing HVAC load by 25%.

Thermal Break Design: EPDM rubber isolation strips (AS 3715 certified) eliminate steel frame thermal bridging, ensuring 360° energy efficiency.





3. Smart Energy Systems, Technology-Driven Living

Dynamic Ventilation Control: Optional low-energy heat recovery ventilation (HRV) system (AS 1668.2 certified) with ≥ 0.5 ACH air exchange, enabling real-time humidity and temperature management.

Solar-Ready Design (updated option) : Pre-installed circuits and roof structures compatible with solar panels, boosting annual power generation by 20%.

4. All-Climate Resilience, Built for Extremes

Disaster Resistance:

Cyclone/Earthquake: AS 4055 W41 wind rating + AS 1170.4 seismic compliance (6.9 magnitude).

Bushfire Protection: BAL 40-rated fire-resistant walls (90-minute integrity) + optional BAL-FZ metal cladding and sprinkler systems.

Weatherproof Durability: Factory-applied 500% flexible waterproof coating (AS 3740 certified) with self-healing micro-cracks, backed by a 10-year leak-free guarantee.



Tangible Benefits of Modular Efficiency

Lower Bills: 40% energy savings, slashing annual costs by thousands of AUD.

Health Assurance: Global GreenTag Gold-certified materials with formaldehyde emissions $\leq 0.1\text{mg/m}^3$ (AS 2360.2), safe for families.

Long-Term Value: 80+ year lifespan (2-3x traditional buildings), 100% recyclable steel, ensuring lasting asset value.



Certifications & Transparency

NatHERS 7-Star: Full-building energy simulation meets Australia's highest standards.

Dual Compliance: NCC Section J energy codes + AS/NZS 4859.1 insulation certification.

Full Traceability: RPEQ-engineer-signed documents, third-party test reports, and construction videos provided for quality assurance.



Phone 0405860421
Email sales@ecoprestige.com.au
Visit <https://ecoprestige.com.au>

Join our community

